

BALDOR • RELIANCE

Customer information packet

XM32422T

40//30HP, 3540//2950RPM, 3PH, 60//50HZ, 324T

Class - CLI GP D; CLII GP F,G

Division - Division I

Specifications

Enclosure	XPFC
Frame	324TS
Frame Material	Iron
Frequency	50.00 Hz 60.00 Hz
Motor Letter Type	Three Phase
Output @ Frequency	30.000 HP @ 50 HZ 40.000 HP @ 60 HZ
Phase	3
Synchronous Speed @ Frequency	3600 RPM @ 60 HZ
Voltage @ Frequency	380.0 V @ 50 HZ 230.0 V @ 60 HZ 190.0 V @ 50 HZ 460.0 V @ 60 HZ
XP Class and Group	CLI GP D; CLII GP F,G
XP Division	Division I
Agency Approvals	CSA EEV UL
Ambient Temperature	40 °C
Auxillary Box	No Auxillary Box
Auxillary Box Lead Termination	None
Base Indicator	Rigid
Bearing Grease Type	Polyrex EM (-20F +300F)
Blower	None
Constant Torque Speed Range	6
Current @ Voltage	98.000 A @ 208.0 V 90.000 A @ 230.0 V 82.000 A @ 190.0 V 45.000 A @ 460.0 V 41.000 A @ 380.0 V
Design Code	A
Drip Cover	No Drip Cover

Part detail

Revision	B
Type	AC
Mech. spec.	
Base	
Status	PRD/A
Elec. spec.	12WGY584
Layout	12LYG783
Eff. date	07-24-2023
CD Diagram	CD0180
Poles	02
Leads	9#8
Proprietary	False
Created date	04-29-2021

Duty Rating	CONT
Efficiency @ 100% Load	92.4 %
Electrically Isolated Bearing	Not Electrically Isolated
Feedback Device	NO FEEDBACK
Frame Prefix	FL
Heater Indicator	No Heater
High Voltage Full Load Amps	41.0 a
Insulation Class	F
Inverter Code	Inverter Duty
IP Rating	NONE
KVA Code	H
Lifting Lugs	Standard Lifting Lugs
Locked Bearing Indicator	Locked Bearing
Max Speed	5400 rpm
Motor Lead Termination	Flying Leads
Motor Standards	NEMA
Motor Type	1252M
Mounting Arrangement	F1
Number of Poles	2
Overall Length	30.50 IN
Power Factor	88
Product Family	Hazardous Location Motor
Pulley Face Code	Standard
Rodent Screen	None
Service Factor	1.00
Shaft Diameter	1.875 IN
Shaft Ground Indicator	No Shaft Grounding
Shaft Rotation	Reversible
Speed	3540 rpm
Speed Code	Single Speed
Starting Method	Direct on line
Thermal Device - Bearing	None
Thermal Device - Winding	Normally Closed Thermostat
Vibration Sensor Indicator	No Vibration Sensor

Winding Thermal 1	None
Winding Thermal 2	None
XP Temp Code	T3C

Nameplate

NP0887XPSLEV

NO.		CC	010A		
S/N		TEMP CODE	T3C		
SPEC.	12-0000-2141	INV.TYPE	PWM		
CAT.NO.	XM32422T	C HP FR	60	C HP TO	90
HP	40//30	CT HZ FROM	6	CT HZ TO	60
VOLTS	230/460//190/380	VT HZ FROM	6	VT HZ TO	60
AMPS	90/45//82/41	MAG CUR	24/12		
RPM	3540//2950	MX RPM	5400		
HZ	60//50	PH	3	CL	F
		NOM.EFF.	92.4		
SER.F.	1.00	DES	A	SL HZ	1
				WK2	4.07
FRAME	324TS	RATING	40C AMB-CONT		
	NEMA MG-1 PART 5, IP54				
	1.15 SF ON SINE WAVE				

Parts list

Part number	Description	Quantity
SA393382	SA 12-0000-2141	1.000 ea
RA384026	RA 12-0000-2141	1.000 ea
LB1624	COMBINED WARNING LABEL, ISO/ANSI PICTOGR	1.000 ea
LC0181	CONNECTION LABEL	1.000 ea
NP0887XPSLEV	SS XP INV UL CSA-EEV CC CL-I GP-D	1.000 ea
85XU0407S04	4X1/4 U DRIVE PIN STAINLESS	2.000 ea
85XU0407S04	4X1/4 U DRIVE PIN STAINLESS	4.000 ea
MN416A01	TAG-INSTAL-MAINT no wire (2100bx)4/22	1.000 ea
LB1073	ALUM XP CAUTION LABEL	1.000 ea
12FH1001A01	FAN HOUSING 312 EXPLOSION PROOF MOTORS	1.000 ea
HW1001A31	LOCKWASHER 5/16, ZINC PLT.591 OD, .319 I	3.000 ea
10XN3118K12	5/16-18 X .75 GRADE 5, ZINC PLATED	3.000 ea
10FN3001A02	310 FAN, PLASTIC 2.000 DIA. BORE	1.000 ea
HW2500A25	WOODRUFF KEY USA #1008 #BLOW CARBON STEE	1.000 ea
MJ1000A02	GREASE, POLYREX EM EXXON	0.200 lb
12EP1705A01	ENDPLATE, MACH. 312 - EXPLOSION PROOF 31	1.000 ea
HA3051A03	1/2-13X2.75 BLT GR8 1.75 TO E NC F/S	4.000 ea
HW1001A50	LOCKWASHER 1/2, ZINC PLT, .879 OD, .509 I	4.000 ea
HW5100A13	W4627-047 WVY WSHER	1.000 ea
HW4500A20	1/8NPT SL PIPE PLUG	1.000 ea
HW4500A20	1/8NPT SL PIPE PLUG	1.000 ea
12EP1706A01	ENDPLATE, MACH. 312 - EXPLOSION PROOF 31	1.000 ea
HW1001A50	LOCKWASHER 1/2, ZINC PLT, .879 OD, .509 I	4.000 ea
HA3051A03	1/2-13X2.75 BLT GR8 1.75 TO E NC F/S	4.000 ea
10XN3118K40	5/16-18 X 2.75" HEX HD, GRADE 5	4.000 ea
HW1001A31	LOCKWASHER 5/16, ZINC PLT.591 OD, .319 I	4.000 ea
HW4500A20	1/8NPT SL PIPE PLUG	1.000 ea
HW4500A20	1/8NPT SL PIPE PLUG	1.000 ea
12CB1001A01	K.O.BOX, MACH X-PROOF, 1.50 NPT HOLE	1.000 ea
10XN3118K16	5/16-18 X 1' GRADE #5, STL, ZINC PLATE	4.000 ea
HW1001A31	LOCKWASHER 5/16, ZINC PLT.591 OD, .319 I	4.000 ea

WD1000B25	GND LUG, BURNDY L125HP OR T&B L125HP-BB	1.000 ea
19XW3118G08	.31-18X.50,HEX WSHR HD,TAPTITE 2,GREEN	1.000 ea
12CB1501A01	COND.BOX LID, MACH., X-PROOF, 310,312	1.000 ea
10XN3816K20	3/8-16 X 1.25 HEX HD CAP GRADE 5	6.000 ea
HW1001A38	LOCKWASHER 3/8, ZINC PLT .688 OD, .382 I	6.000 ea
MG1025G29	WILKOFAST, 789.229, DARK CHARCOAL GRAY	0.125 ga
14PA1000	PACKAGING 314 GROUP COMBINED PRINT	1.000 ea
HW2501H18	KEY, 1/2 SQ X 2.000	1.000 ea

AC Induction Motor Performance Data

Record # 66216

Typical performance - not guaranteed values

Winding: 12WGY584-R006		Type: 1252M		Enclosure: XPFC	
Nameplate Data			460 V, 60 Hz: High Voltage Connection		
Rated Output (HP)	40	Full Load Torque	59.2 LB-FT		
Volts	230/460	Start Configuration	direct on line		
Full Load Amps	90/45	Breakdown Torque	250 LB-FT		
R.P.M.	3540	Pull-up Torque	85.8 LB-FT		
Hz	60 Phase	3	Locked-rotor Torque	118 LB-FT	
NEMA Design Code	A KVA Code	H	Starting Current	325 A	
Service Factor (S.F.)	1	No-load Current	11.7 A		
NEMA Nom. Eff.	92.4 Power Factor	88	Line-line Res. @ 25°C	0.12 Ω	
Rating - Duty	40C AMB-CONT	Temp. Rise @ Rated Load	59°C		
		Locked-rotor Power Factor	20.8		
		Rotor inertia	4.07 LB-FT ²		

Load Characteristics 460 V, 60 Hz, 40 HP

% of Rated Load	25	50	75	100	125	150
Power Factor	67	83	89	90	91	91
Efficiency	84.6	90.4	91.9	92.6	92	91.5
Speed	3587	3574	3561	3548	3533	3518
Line amperes	16.4	24.7	34.4	44.7	55.9	67.4

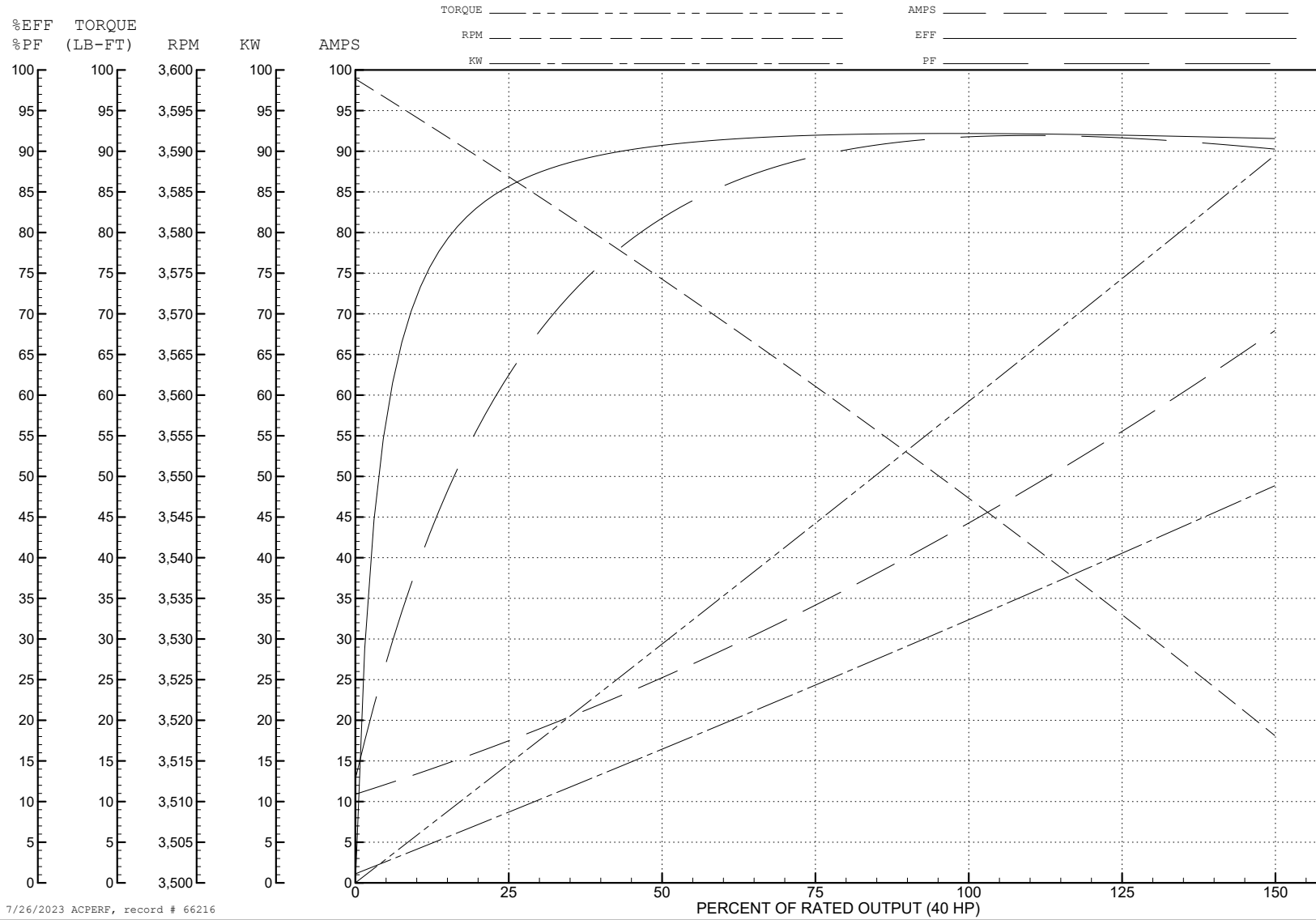
ABB Motors and Mechanical Inc.

WINDING # 12WGY584

40 HP 3 PH 60 HZ 3540 RPM 460 V 1252M

Typical performance - not guaranteed values.

TORQUES (LB-FT): PO=250 PU=85.8 LR=118 LRA=325



7/26/2023 ACPERF, record # 66216

AC Induction Motor Performance Data

Record # 75686

Typical performance - not guaranteed values

Winding: 12WGY584-R003		Type: 1252M	Enclosure: XPFC	
Nameplate Data			380 V, 50 Hz: High Voltage Connection	
Rated Output (HP)	40//30	Full Load Torque	53.34 LB-FT	
Volts	230/460//190/380	Start Configuration	direct on line	
Full Load Amps	90/45//82/41	Breakdown Torque	243 LB-FT	
R.P.M.	3540//2950	Pull-up Torque	91.37 LB-FT	
Hz	60//50 Phase	Locked-rotor Torque	126 LB-FT	
NEMA Design Code	A KVA Code	Starting Current	319 A	
Service Factor (S.F.)	1	No-load Current	11.51 A	
NEMA Nom. Eff.	92.4 Power Factor	Line-line Res. @ 25°C	0.125 Ω	
Rating - Duty	40C AMB-CONT	Temp. Rise @ Rated Load	51°C	
S.F. Amps		Temp. Rise @ S.F. Load	62°C	
		Locked-rotor Power Factor	23.5	
		Rotor inertia	4.07 LB-FT ²	

Load Characteristics 380 V, 50 Hz, 30 HP

% of Rated Load	25	50	75	100	125	150
Power Factor	64	82	88	90	91	91
Efficiency	85.1	90.6	92	92.6	91.9	91.3
Speed	2988	2977	2965	2954	2941	2928
Line amperes	15.53	22.84	31.5	40.78	50.89	61.21

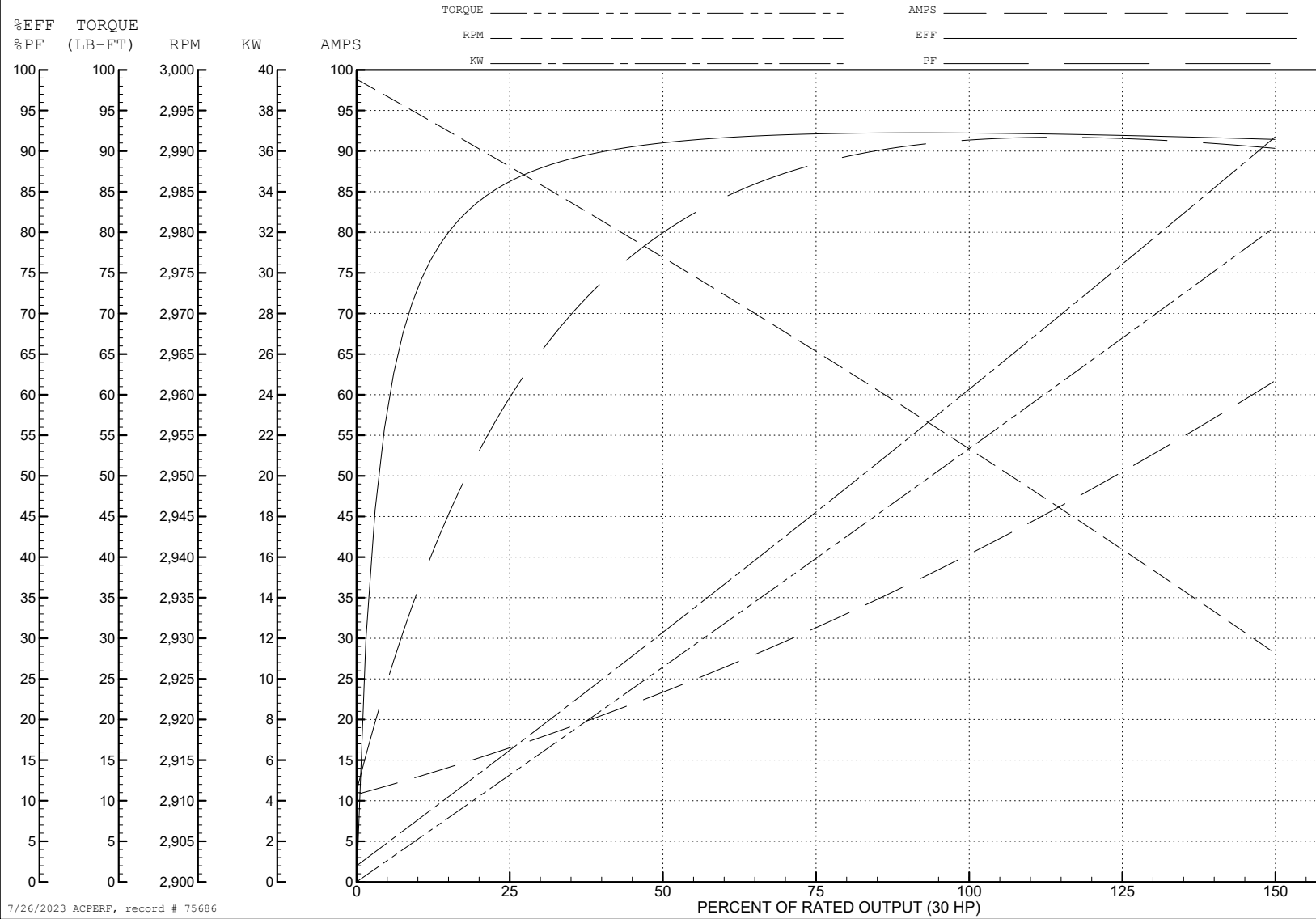
ABB Motors and Mechanical Inc.

WINDING # 12WGY584

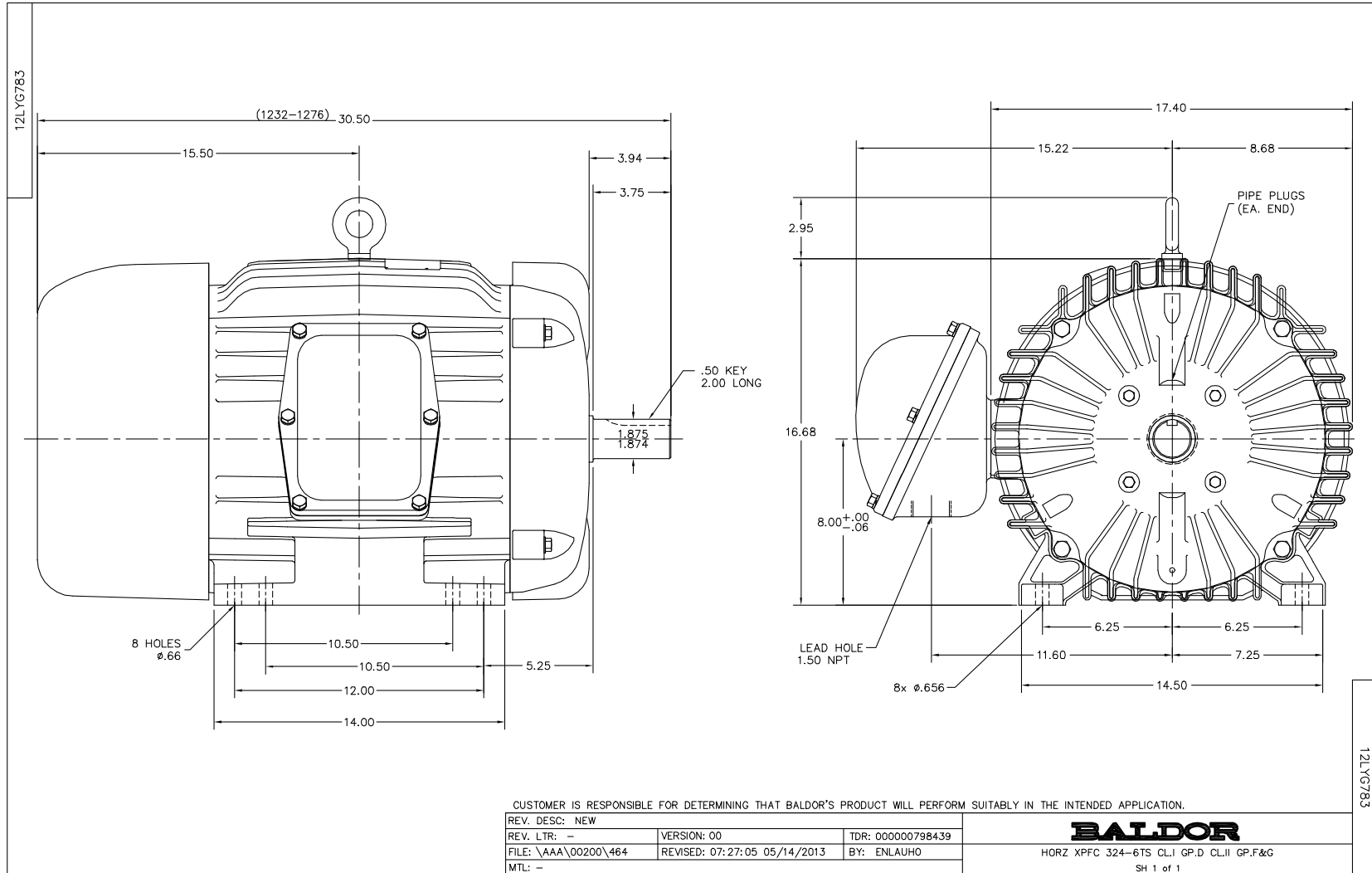
30 HP 3 PH 50 HZ 2954 RPM 380 V 1252M

Typical performance - not guaranteed values.

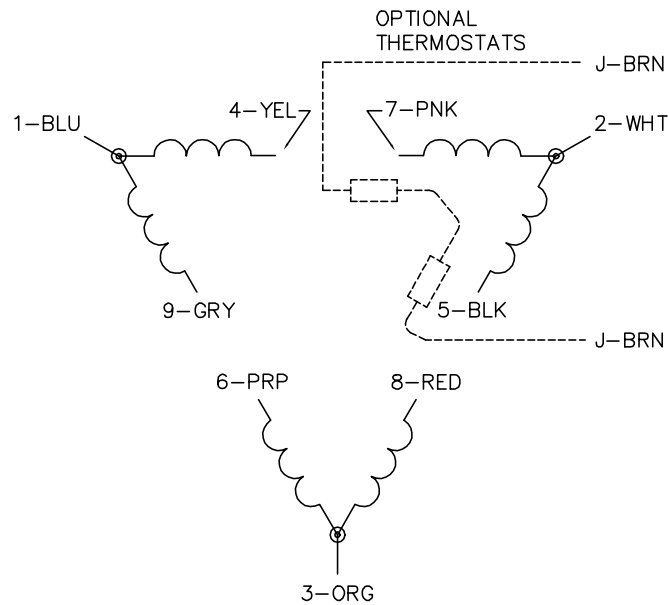
TORQUES (LB-FT): PO=243 PU=91.37 LR=126 LRA=319



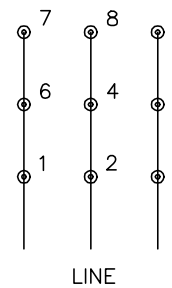
7/26/2023 ACPERF, record # 75686



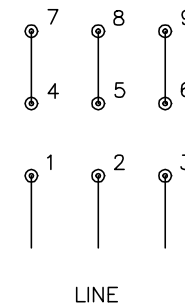
CD0180



LOW VOLTAGE
(2D)



HIGH VOLTAGE
(1D)



NOTES:

1. INTERCHANGE ANY TWO LINE LEADS TO REVERSE ROTATION.
2. OPTIONAL THERMOSTATS ARE PROVIDED WHEN SPECIFIED.
3. ACTUAL NUMBER OF INTERNAL PARALLEL CIRCUITS MAY BE A MULTIPLE OF THOSE SHOWN ABOVE.
4. LEAD COLORS ARE OPTIONAL. LEADS MUST ALWAYS BE NUMBERED AS SHOWN.

CD0180

REV. DESC: ADD CLASS CONN00000007		
REV. LTR: D	VERSION: 01	TDR: 000001099922
FILE: \AAA\00005\148	REVISED: 10:25:29 02/19/2019	BY: ENBRIRO
MTL: -	© □	

BALDOR - RELIANCE®

3PH, DV, 9 LEADS, DELTA CONNECTION

SH 1 of 1